






MATTERS ARISING

<https://doi.org/10.1038/s41467-019-10531-3>

OPEN

# Reply to: A critical examination of a newly proposed interhemispheric teleconnection to Southwestern US winter precipitation

Antonios Mamalakis <sup>1</sup>, Jin-Yi Yu <sup>2</sup>, James T. Randerson <sup>2</sup>, Amir AghaKouchak <sup>1,2</sup> & Efi Foufoula-Georgiou <sup>1,2</sup>

REPLYING TO P. B. Gibson et al. *Nature Communications* <https://doi.org/10.1038/s41467-019-10528-y> (2019)

Gibson et al.<sup>1</sup> comment on the physical mechanism suggested by Mamalakis et al.<sup>2</sup> (hereafter referred to as M18), and question the first step of the newly proposed interhemispheric teleconnection, i.e., the atmospheric bridge, whereby sea surface temperature (SST) close to New Zealand (termed as NZI; the New Zealand Index<sup>2</sup>) modulates the SST in the Northwestern Pacific. Specifically, they suggest that there is no direct causal relationship between these key areas since the observed high statistical correlations between the corresponding SST anomalies can be largely explained by local SST memory and the El Niño-Southern Oscillation (ENSO), and that the increase in the correlations over the past four decades, as reported in M18, is likely the result of internal variability alone, not caused by historical forcings. Gibson et al.<sup>1</sup> also argue that warm NZI is not associated with decreased convective activity and cloud cover over the east of the Philippines region, as suggested by M18. We appreciate the opportunity to debate these issues. In principle, we agree that a combination of more than one contributors can drive climate (and SST) variability in the northwestern Pacific (i.e., M18 did not argue that NZI is the only driver). However, we disagree with the general suggestion by Gibson et al.<sup>1</sup> that the atmospheric bridge, as proposed in M18, is not supported by the data (observations and models). Here, we present evidence that indeed NZI carries non-redundant information that cannot be dismissed, it cannot be explained by internal variability alone, and we provide further analysis that supports the causal mechanism of the proposed atmospheric bridge. We also point out some intricate limitations in the analysis of Gibson et al., that might have affected their conclusions.

One of the arguments of Gibson et al.<sup>1</sup> in challenging the NZI lagged association with northwestern Pacific SST is that the statistical correlations between these key areas decrease when accounting for (using partial correlation) local SST memory or ENSO (specifically, the Southern Oscillation Index - SOI). However, their analysis exhibits some limitations. Firstly, M18 did not

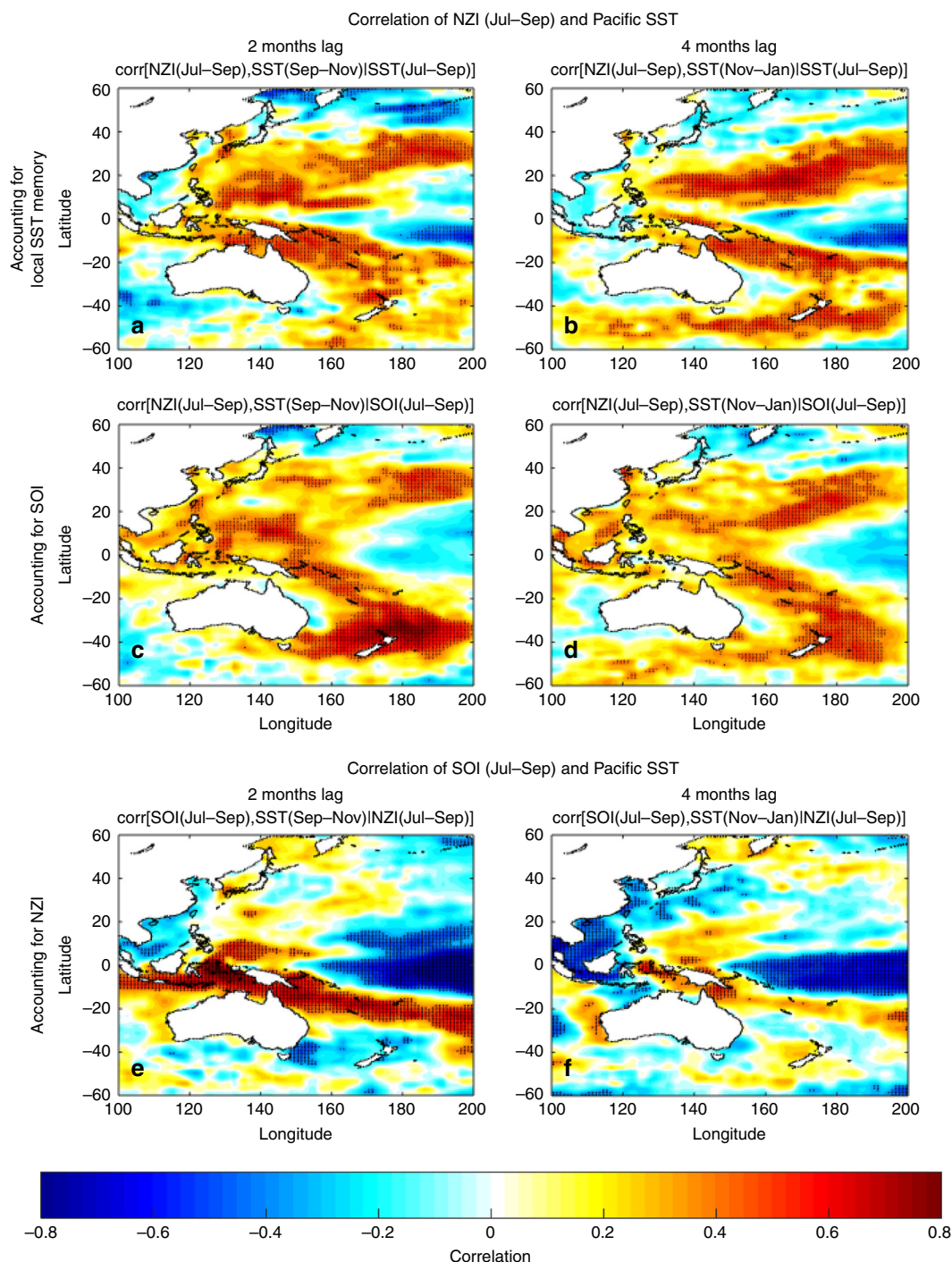
argue that NZI is the only driver of SST variability in the northwestern Pacific. In fact, M18 already invoked the local SST memory in their proposed teleconnection mechanism (see step 2 in Figure 5 of M18). M18 simply argued for the emergence of a new western Pacific interhemispheric teleconnection, which in the ocean-atmosphere coupled system can affect, among other contributors, the north Pacific climate and ultimately the precipitation in the southwestern US (SWUS). Having clarified this, the meaningful question is not whether correlations of NZI and SST in the northwestern Pacific decrease when considering additional predictors/mechanisms (this is to be expected), but whether there are still patterns of statistically significant relations not explained by other predictors. As Gibson et al.'s<sup>1</sup> own results suggest, a consistent pattern of statistically significant (local hypothesis testing at  $\alpha = 0.05$ ) correlations is still evident after accounting for both local SST memory and SOI (see their Fig. 1e, f), which means that NZI is not a redundant predictor of the SST in the northwestern Pacific. Thus, we do not think the results of Gibson et al.<sup>1</sup> challenge our general suggestion. Note that although in the results of Gibson et al.<sup>1</sup> (their Fig. 1f) there is an entire pattern of local statistically significant correlations, the authors seem to assess correlation significance solely by using the results from the false discovery rate (FDR) method. This can be misleading, because FDR only controls the likelihood of the type I error (rejecting a true null hypothesis), yet without controlling the likelihood of the type II error (not rejecting a false null hypothesis), which is known to increase as the number of multiple hypotheses increases (known as cost of multiplicity control<sup>3</sup>).

Moreover, assessing the solidity of the atmospheric bridge mechanism by using only a small box ( $20^\circ \times 10^\circ$ ) to capture the SST variability in the northwestern Pacific can be misleading, especially when there is no investigation of how sensitive the general conclusions are to the choice of that box. The specific box east of the Philippines was tentatively used in our original study to summarize and compare the western Pacific dynamics before

<sup>1</sup> Department of Civil and Environmental Engineering, University of California, Irvine, CA, USA. <sup>2</sup> Department of Earth System Science, University of California, Irvine, CA, USA. Correspondence and requests for materials should be addressed to E.F.-G. (email: [efi@uci.edu](mailto:efi@uci.edu))

and after 1980s (Figure 7 in M18); a very different context than the present investigation of causality and mechanism assessment. Thus, in order to rigorously assess the arguments of Gibson et al.<sup>1</sup>, we investigate herein the effect of local SST memory and SOI on the correlation between the late summer NZI and lagged SSTs over the entire western Pacific (not only over a specified box). We find that statistically significant correlation patterns are

evident in the northwestern Pacific (with correlations reaching 0.7 in specific areas, see Fig. 1), even after accounting for local SST memory (Fig. 1a, b) or SOI (Fig. 1c, d). When reproducing Fig. 1 of Gibson et al.<sup>1</sup> by considering a larger region in the northwestern Pacific (of comparable size to the NZI region and defined as the  $30^\circ \times 15^\circ$  box of  $130^\circ\text{E}$ – $160^\circ\text{E}$  and  $5^\circ\text{N}$ – $20^\circ\text{N}$  – we call the average SST in that box as the East of the Philippines Index, EPI),



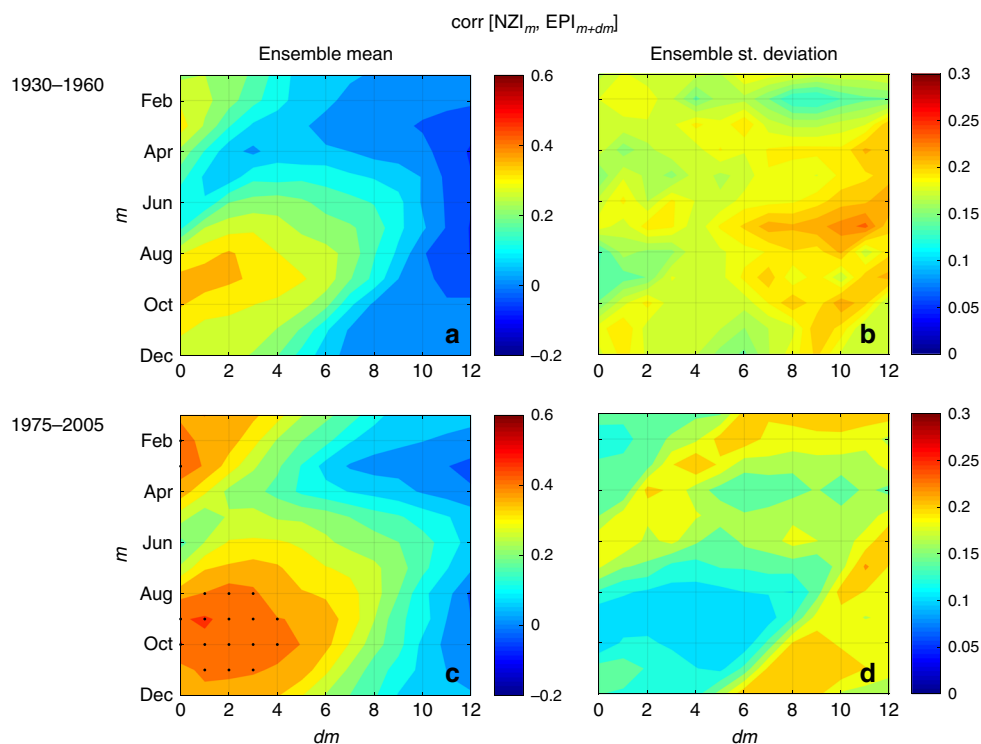
**Fig. 1** NZI interhemispheric connection when accounting for local SST memory and ENSO in 1982–2015. **a** Correlation map of NZI during Jul–Sep and Pacific SST during Sep–Nov, after accounting for the SST memory in each grid point. Before calculating correlations all series were detrended. Black dots indicate statistical significance at  $\alpha = 0.05$ . **b** Same as in **a**, but using SST during Nov–Jan. **c, d** Same as in **a–b**, but after accounting for the Southern Oscillation Index (SOI). **e, f** Same as in **c–d**, but SOI is correlated with Pacific SST, after accounting for the NZI. It is evident that NZI correlations with SST in the northwestern Pacific remain high and statistically significant even after accounting for local SST memory and/or SOI. In contrast, when accounting for NZI, correlations of SOI with SST in the northwestern Pacific are not statistically significant

we find that NZI-EPI correlations remain high and statistically significant at  $\alpha = 0.05$ , after accounting for the EPI memory (see Supplementary Fig. 1b). Particularly in the summer period, correlations on the order of 0.6 are still evident, which means that NZI leads EPI SST in the following winter. Accordingly, our results show that when accounting for SOI, strong NZI-EPI correlation patterns are still evident (see Supplementary Fig. 1c). All above results support that the lagged association between late summer-early fall NZI and northwestern Pacific SST is robust, and is not undermined by SOI or local SST persistence. Lastly, we note that if there was no direct causal relationship between NZI and EPI, and SOI was the driver of this interhemispheric connection (as implied by Gibson et al.<sup>1</sup>), then following the reasoning by Gibson et al.<sup>1</sup>, one would expect that the correlation of SOI with the northwestern Pacific SSTs would be significant even after accounting for the NZI variability. However, our results indicate that this is not the case (not shown in Gibson et al.<sup>1</sup>). Particularly, when accounting for the NZI variability, significant correlations of SOI and Pacific SST appear only in the tropics and do not extend to the northern Pacific (Fig. 1e, f). Moreover, statistically significant SOI-EPI correlations are only found after November (see Supplementary Fig. 1f), which suggests that in late summer, NZI carries non-redundant information for the fall-winter SST over the northwestern Pacific. In summary, although SOI and local SST memory are known to account for a fraction of SST variability in the northwestern Pacific, our results show that they do not undermine the robustness of the NZI-EPI statistical relationship.

The second point raised by Gibson et al.<sup>1</sup> concerns the decadal changes in the NZI-EPI relationship. Gibson et al.<sup>1</sup> use SST data from the Community Earth System Model-Large ENSEMBLE project (CESM-LENS, see ref.<sup>4</sup>) and show that there are some ensemble members (realizations) where NZI-EPI are highly

coupled and some where they are not statistically related. Based on this result, they cast doubt on the statement by M18 that the recent strengthening in the NZI-EPI relationship may be attributed, among others, to climate change. Specifically, Gibson et al.<sup>1</sup> conclude that “any apparent lagged correlations found between these regions are not likely a consistent or emerging feature of the climate system under historical forcings, but instead occasionally arise due to stochastic internal climate variability”. We respectfully disagree with this statement, since their results suggest that internal variability can indeed contribute in shaping the NZI-EPI relation (something that M18 did not argue against) but they cannot exclude historical forcings from being a contributor as well. To more extensively explore this, here we use the same set of LENS simulations that Gibson et al.<sup>1</sup> use and compare the simulated NZI-EPI correlations before and after 1970s. Our results show that indeed there is a strengthening in the NZI-EPI relationship after the 1970s (see Fig. 2), which is in accordance with the findings by M18. The latter is indicated not only by the increase of the ensemble mean correlations between NZI and EPI (especially in the late-summer season) but also by the decrease of the inter-ensemble variability in the recent decades, which indicates convergence of the ensembles. Thus, in accordance with M18, the LENS simulations suggest that the increased NZI-EPI correlations can be an emerging feature of the climate system under historical forcings, and cannot be solely explained by internal variability. Note that if stochastic internal variability was the only driver of the changes in the observed NZI-EPI correlations, then no changes should be apparent in the LENS ensemble mean correlations between the two periods, since changes in individual realizations would not be synchronized, and would cancel each other out.

The last claim by Gibson et al.<sup>1</sup> is that warm NZI is not associated with decreased convective activity and cloud cover over the east of the Philippines region, as suggested by M18. Here, we



**Fig. 2** Changes in the strength of correlation between the NZI and EPI regions derived from the CESM-LENS project. Ensemble mean **a, c** and ensemble standard deviation **b, d** of time-lagged correlations between NZI (averaged over the month indicated in the vertical axis) and EPI (lagged forward in time as indicated in the horizontal axis) in 1930–1960 **a, b** and in 1975–2005 **c, d**. Before calculating correlations all series were detrended. Black dots indicate statistical significance at  $\alpha = 0.05$ . A higher level of agreement among ensembles and a clear increase in the NZI-EPI correlations is observed after 1975



the southwestern Pacific (close to New Zealand) and ascending motions over the northwestern Pacific (close to the Philippines) weaken in all pressure levels, which translates to a weakened Hadley circulation (not reversed as Gibson et al.<sup>1</sup> imply) relatively to the cool NZI years (see the north-south dipole in Fig. 3b). Accordingly, the suppressed cloud formation over EPI results in increased solar radiation reaching the surface (see Fig. 3c, d), which can induce positive SST anomalies in this region (process 1 in Figure 5 of M18). In the Nov–Mar period, the cyclonic activity southwestward of the Philippines helps maintain the SST anomalies in the northwestern and central Pacific (process 2 in Figure 5 of M18), while a persistent high pressure ridge is evident off the coast of California, deflecting the jet stream to the north (process 3 in Figure 5 of M18) and introducing positive precipitation anomalies over the northwestern US and negative precipitation anomalies (drought) over the SWUS. Similar conclusions are obtained using correlation analysis and multiple other atmospheric variables (see Supplementary Figs. 2 and 3 of the present study). Particularly, a clear north-south dipole pattern is obtained over the western Pacific, which reveals the modulation effect of the NZI on the regional Hadley circulation. Finally, we note that the different findings of Gibson et al.<sup>1</sup> regarding the effect of NZI on the convective activity over the northwestern Pacific might be attributed to the following reasons. First, Gibson et al.<sup>1</sup> base their conclusions on the ERA-Interim dataset which, as shown in Supplementary Fig. 3 of the present study, exhibits the lowest level of agreement with other reanalysis and satellite datasets in reproducing the relationship of NZI and the convective activity over EPI. Second, their results presented in Fig. 2c, f, i are based on only 17 years of climatology (compared to our analysis based on 34 years, 1982–2015), which is not a sufficient size for statistical (correlation or composite) analysis.

In conclusion, we thank Gibson et al.<sup>1</sup> for their critical analysis and exploration of the proposed physical mechanism of the NZI teleconnection, and for providing us with the opportunity to further examine and strengthen our original arguments. We believe their letter and our response advance the important topic of understanding sources of predictability of regional precipitation and their physical underpinnings in the western Pacific. As noted already by M18, given the short observational record that is available, whether NZI SST anomalies alone are sufficient to modulate the meridional circulation over the western Pacific demands extensive further testing, which will require the performance and analysis of a hierarchy of well-designed and targeted numerical simulations. We hope that this undertaking will be the scope of future work in our group and others in the community.

### Data availability

All data used in this study are freely available. Time series of SOI (monthly scale) were obtained from NOAA website: <https://www.esrl.noaa.gov/psd/data/climateindices/list>. In this study, the Optimum Interpolation SST dataset was used, which is freely available at <https://www.esrl.noaa.gov/psd/data/gridded/data.noaa.oisst.v2.html>, while omega velocity, OLR, ISR and TCC were obtained from 20<sup>th</sup> century reanalysis project [https://www.esrl.noaa.gov/psd/data/gridded/data.20thC\\_ReanV2c.html](https://www.esrl.noaa.gov/psd/data/gridded/data.20thC_ReanV2c.html). CESM-LENS<sup>4</sup> data were obtained from <http://www.cesm.ucar.edu/projects/community-projects/LENS/data-sets.html>. OLR and TCC products in Supplementary Fig. 3 are from the NCEP-DOE reanalysis and the ERA-Interim reanalysis, and were downloaded from <https://www.esrl.noaa.gov/psd/data/gridded/data.ncep.reanalysis2.gaussian.html> and <http://apps.ecmwf.int/datasets/data/interim-full-daily/levtype=sfc>, respectively, while satellite precipitation is from PERSIANN-CDR dataset ([chrsdata.eng.uci.edu](http://chrsdata.eng.uci.edu)).

Also, upon reasonable request, the data and code that support the findings of this study can be provided by the corresponding author.

Received: 3 September 2018 Accepted: 10 May 2019

Published online: 27 June 2019

### References

- Gibson, P. B., Waliser, D. E. & DeFlorio, M. J. A critical examination of a newly proposed interhemispheric teleconnection to Southwestern US winter precipitation. *Nat. Commun.* <https://doi.org/10.1038/s41467-019-10528-y> (2019).
- Mamalakis, A., Yu, J.-Y., Randerson, J. T., AghaKouchak, A. & Foufoula-Georgiou, E. A new interhemispheric teleconnection increases predictability of winter precipitation in southwestern US. *Nat. Commun.* **9**, 2332 (2018).
- Benjamini, Y. & Hochberg, Y. Controlling the false discovery rate: a practical and powerful approach to multiple testing. *J. R. Stat. Soc. B* **57**, 289–300 (1995).
- Kay, J. E. et al. The Community Earth System Model (CESM) large ensemble project: a community resource for studying climate change in the presence of internal climate variability. *Bull. Am. Meteorol. Soc.* **96**, 1333–1349 (2015).
- Mamalakis, A., & Foufoula-Georgiou, E. A multivariate probabilistic framework for tracking the intertropical convergence zone: analysis of recent climatology and past trends. *Geophys. Res. Lett.*, **45** (2018) <https://doi.org/10.1029/2018GL079865>
- Lindzen, R. S. & Hou, A. Y. Hadley circulation for zonally averaged heating centered off the equator. *J. Atmos. Sci.* **45**, 2416–2427 (1988).
- Trenberth, K. E., Stepaniak, D. P. & Caron, J. M. The global monsoon as seen through the divergent atmospheric circulation. *J. Clim.* **13**, 3969–3993 (2000).

### Acknowledgements

Partial support for this research was provided by the National Science Foundation (NSF) under the Water Sustainability and Climate Program (grant EAR-1209402), a TRIPODS + CLIMATE grant (DMS-1839336), and the Science Across Virtual Institutes Project (LIFE: Linked Institutions for Future Earth, grant EAR-1242458), as well as by NASA's Global Precipitation Measurement (GPM) Program (grant NNX16AO56G). A research grant from UCI to advance these research ideas is also acknowledged.

### Author contributions

A.M. performed the data analysis, and wrote the manuscript. E.F.-G. supervised the research, methods of analysis and interpretation, and assisted in the manuscript writing. J.-Y.Y., J.T.R. and A.A. contributed to the physical interpretation of the results and to the manuscript writing.

### Additional information

**Supplementary Information** accompanies this paper at <https://doi.org/10.1038/s41467-019-10531-3>.

**Competing interests:** The authors declare no competing interests.

**Reprints and permission** information is available online at <http://npg.nature.com/reprintsandpermissions/>

**Publisher's note:** Springer Nature remains neutral with regard to jurisdictional claims in published maps and institutional affiliations.



**Open Access** This article is licensed under a Creative Commons Attribution 4.0 International License, which permits use, sharing, adaptation, distribution and reproduction in any medium or format, as long as you give appropriate credit to the original author(s) and the source, provide a link to the Creative Commons license, and indicate if changes were made. The images or other third party material in this article are included in the article's Creative Commons license, unless indicated otherwise in a credit line to the material. If material is not included in the article's Creative Commons license and your intended use is not permitted by statutory regulation or exceeds the permitted use, you will need to obtain permission directly from the copyright holder. To view a copy of this license, visit <http://creativecommons.org/licenses/by/4.0/>.

© The Author(s) 2019